



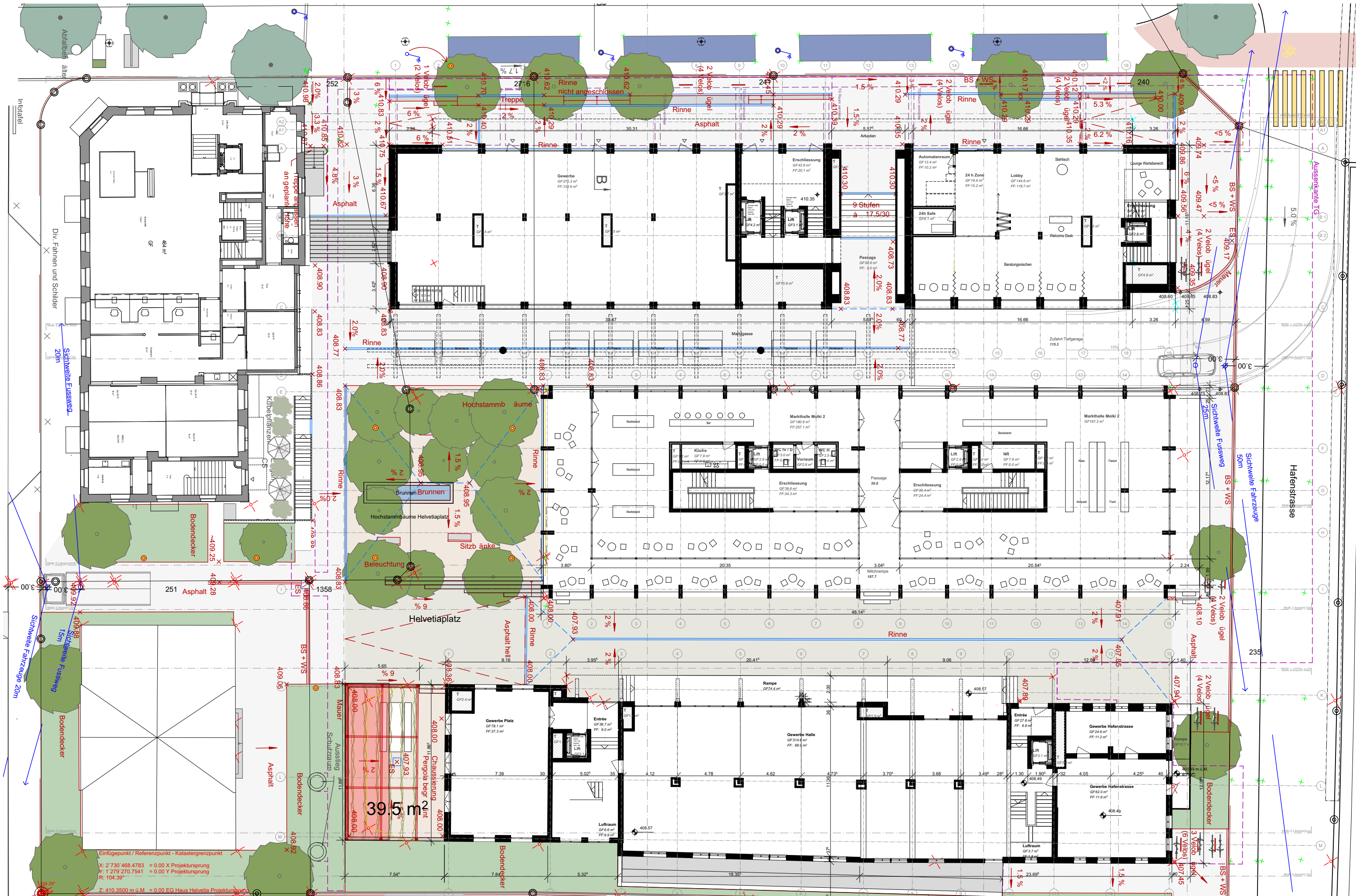
Projektdokumentation: Zur Helvetia, Kreuzlingen

Inhaltsverzeichnis

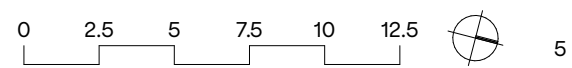
Situation Katasterplan	4
Erdgeschoss: Gewerbe	5 – 6
Untergeschosse: Einstellhallen	7 – 14
Obergeschosse: Wohnen & Arbeiten	15 – 20



Bestand Helvetia



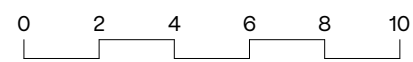
Erdbgeschoss

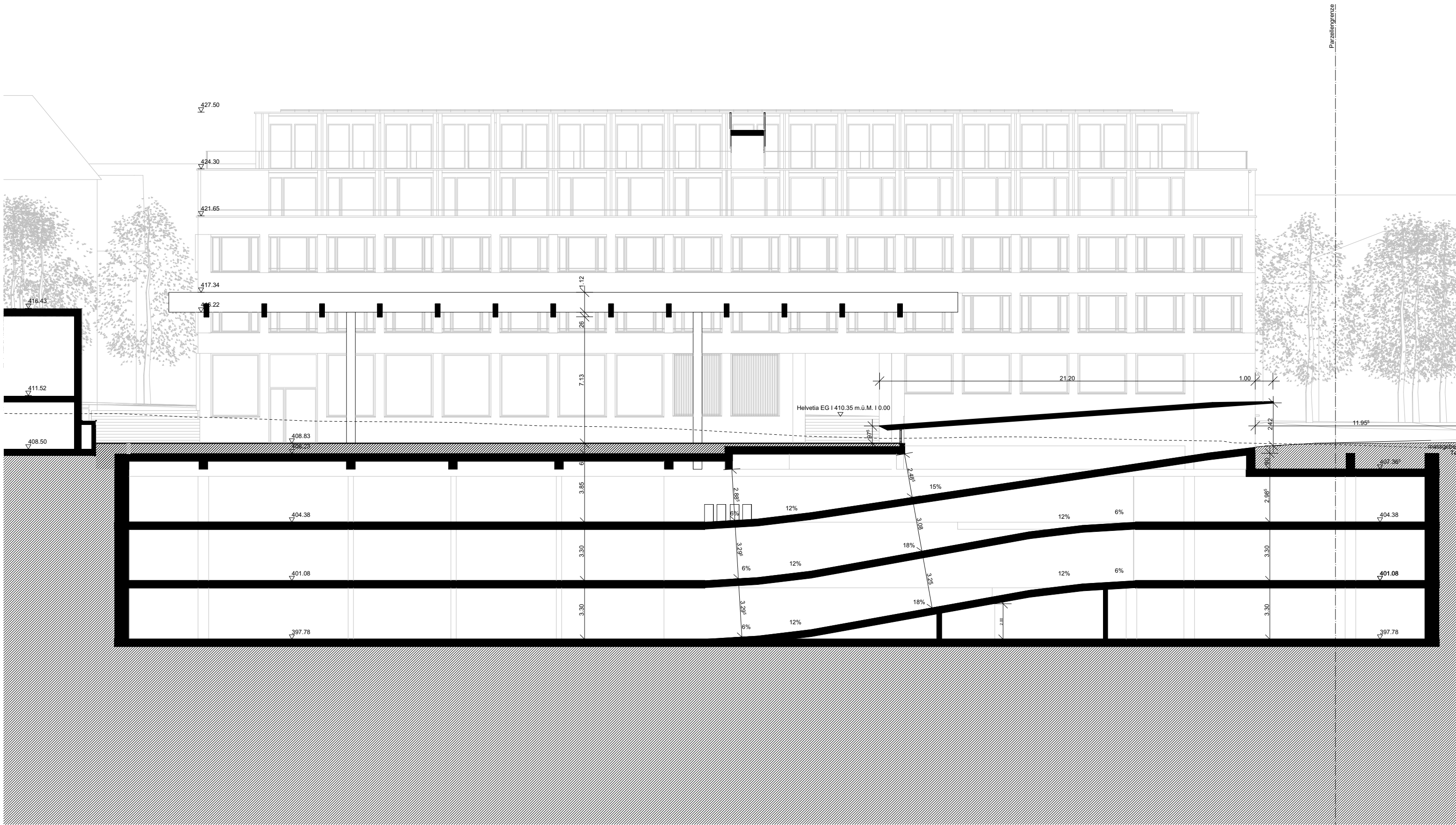


Einfügepunkt / Referenzpunkt - Katastergrenzpunkt
 X: 2730 468.4783 = 0.00 X Projektursprung
 Y: 1279 270.7541 = 0.00 Y Projektursprung
 R: 104.39°
 Z: 410.3500 m ü.M. = 0.00 EG Haus Helvetia Projektursprung

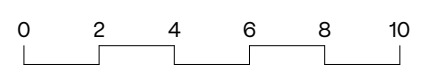


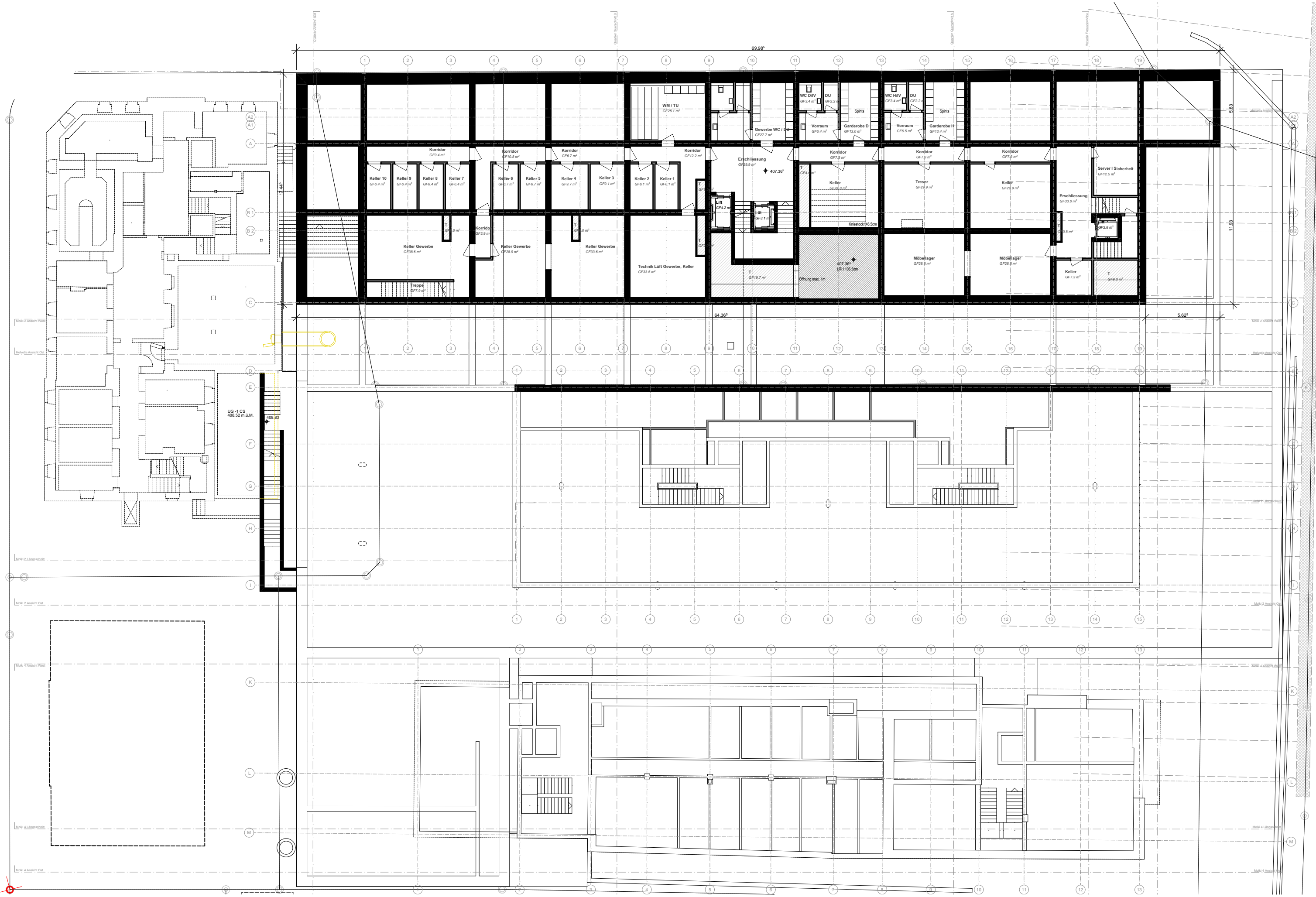
Ansicht Quartier Nord





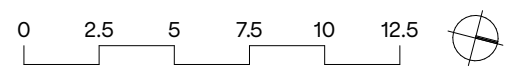
Ansicht Helvetia Ost

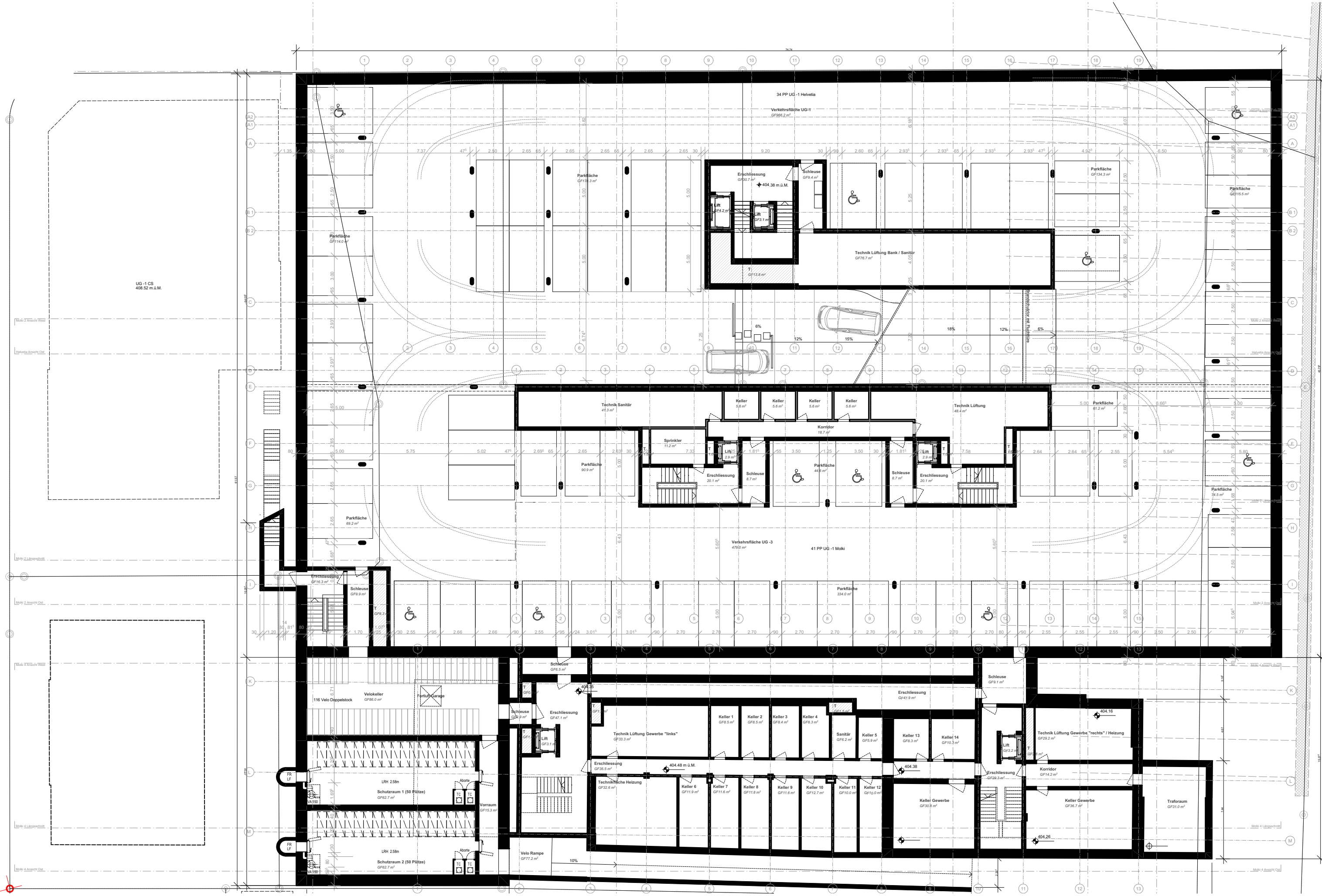




UG -1 CS
408.52 m.ü.M.

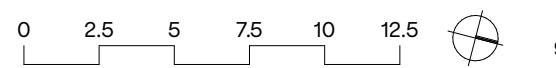
Sockelgeschoss





UG -1 CS
408.52 m.d.M.

1. Untergeschoss



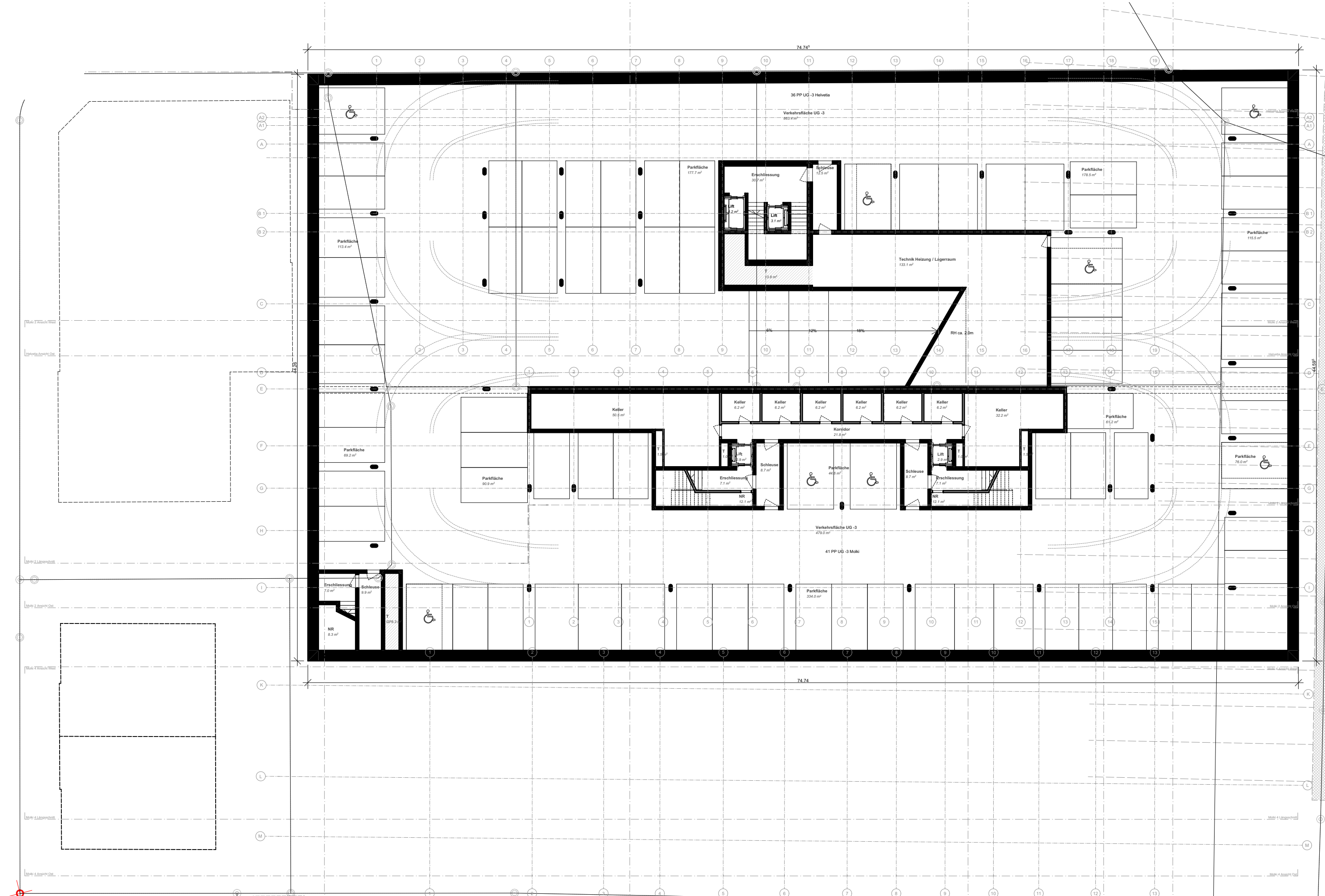
Parzellengrenze

Parzellengrenze

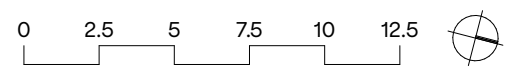


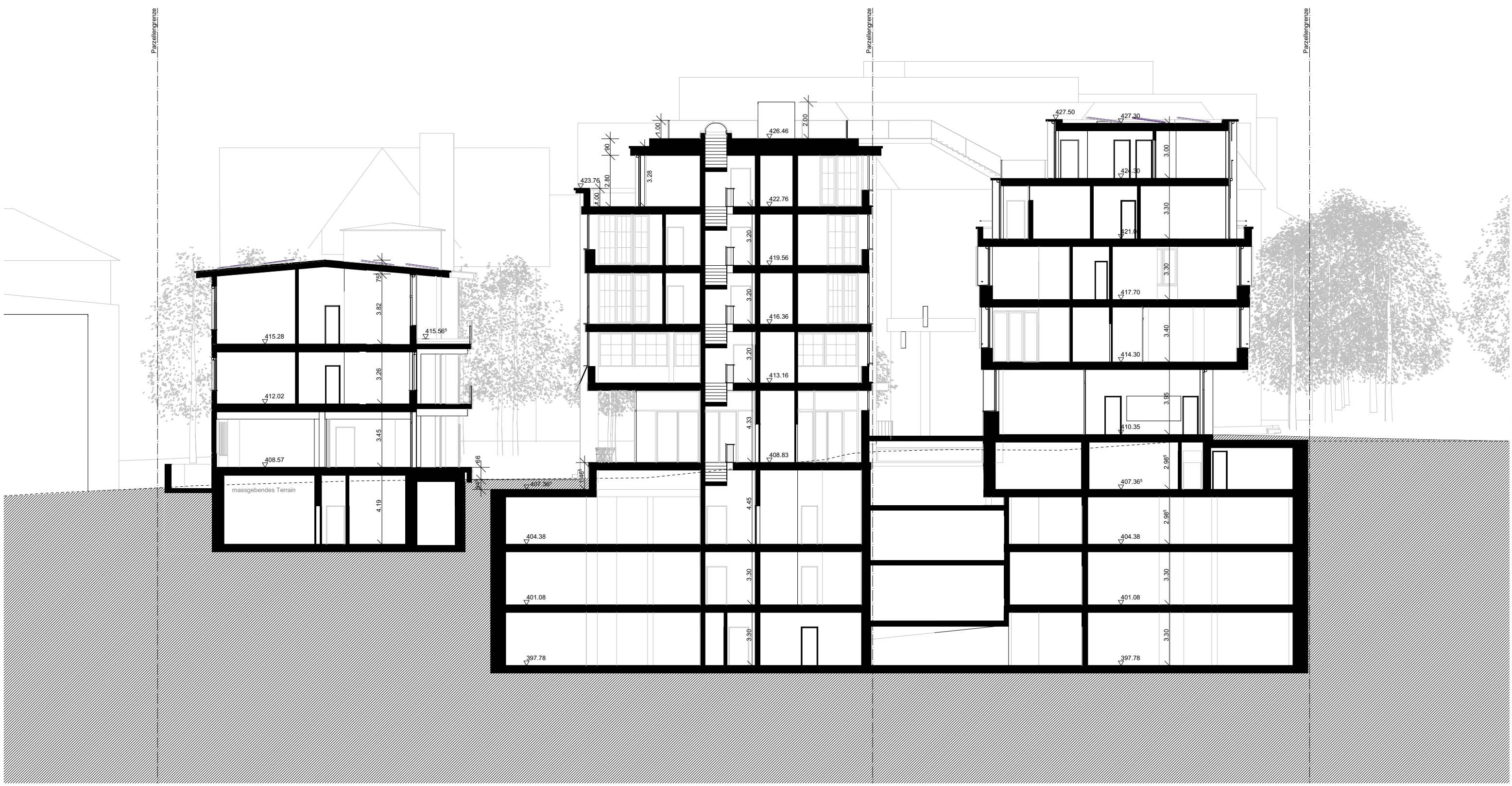
Ansicht Molki 4 Ost



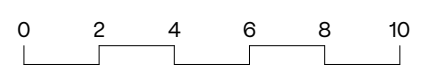


3. Untergeschoss



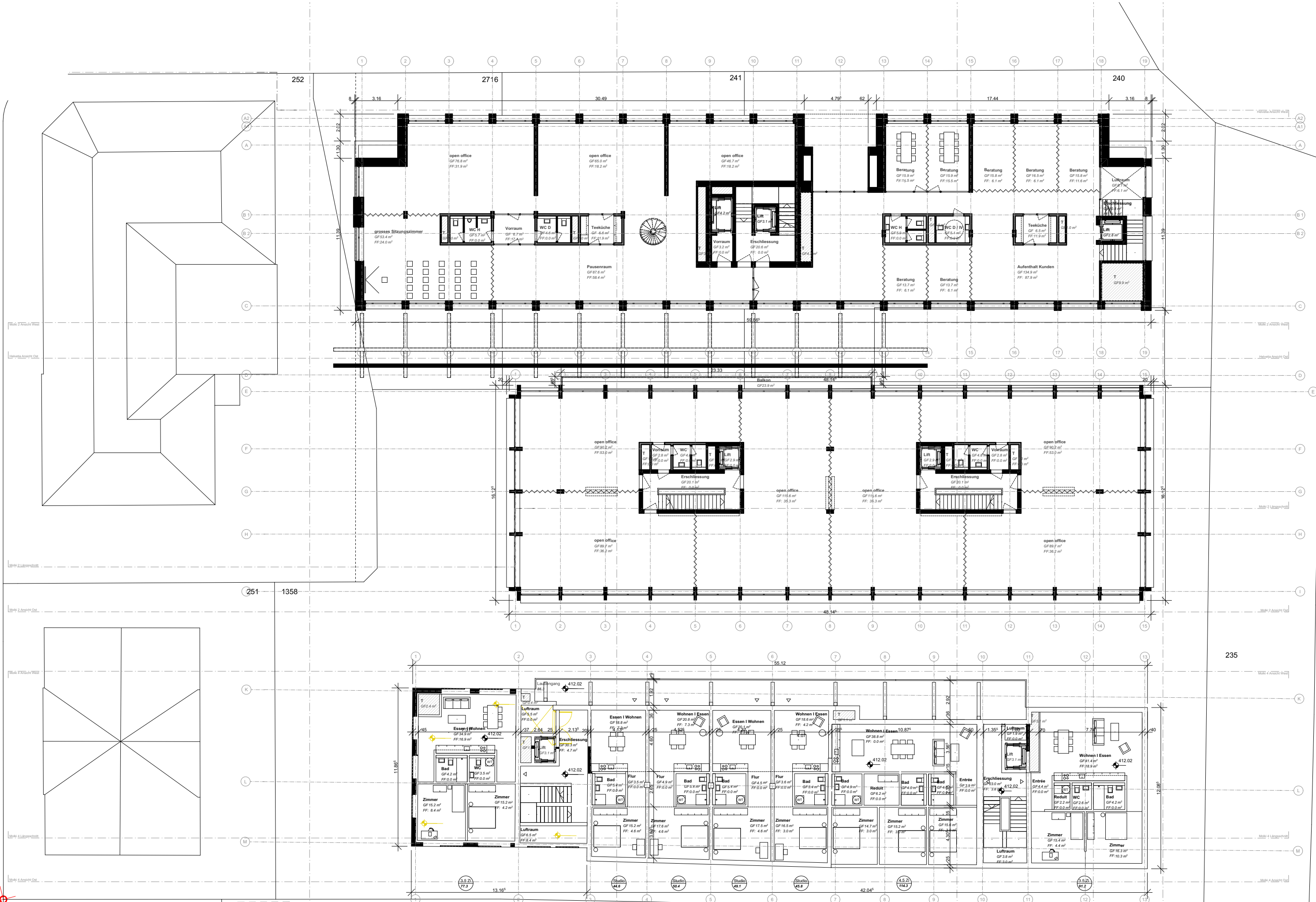


Querschnitt Quartier

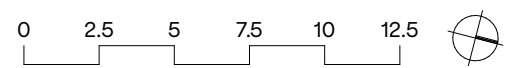


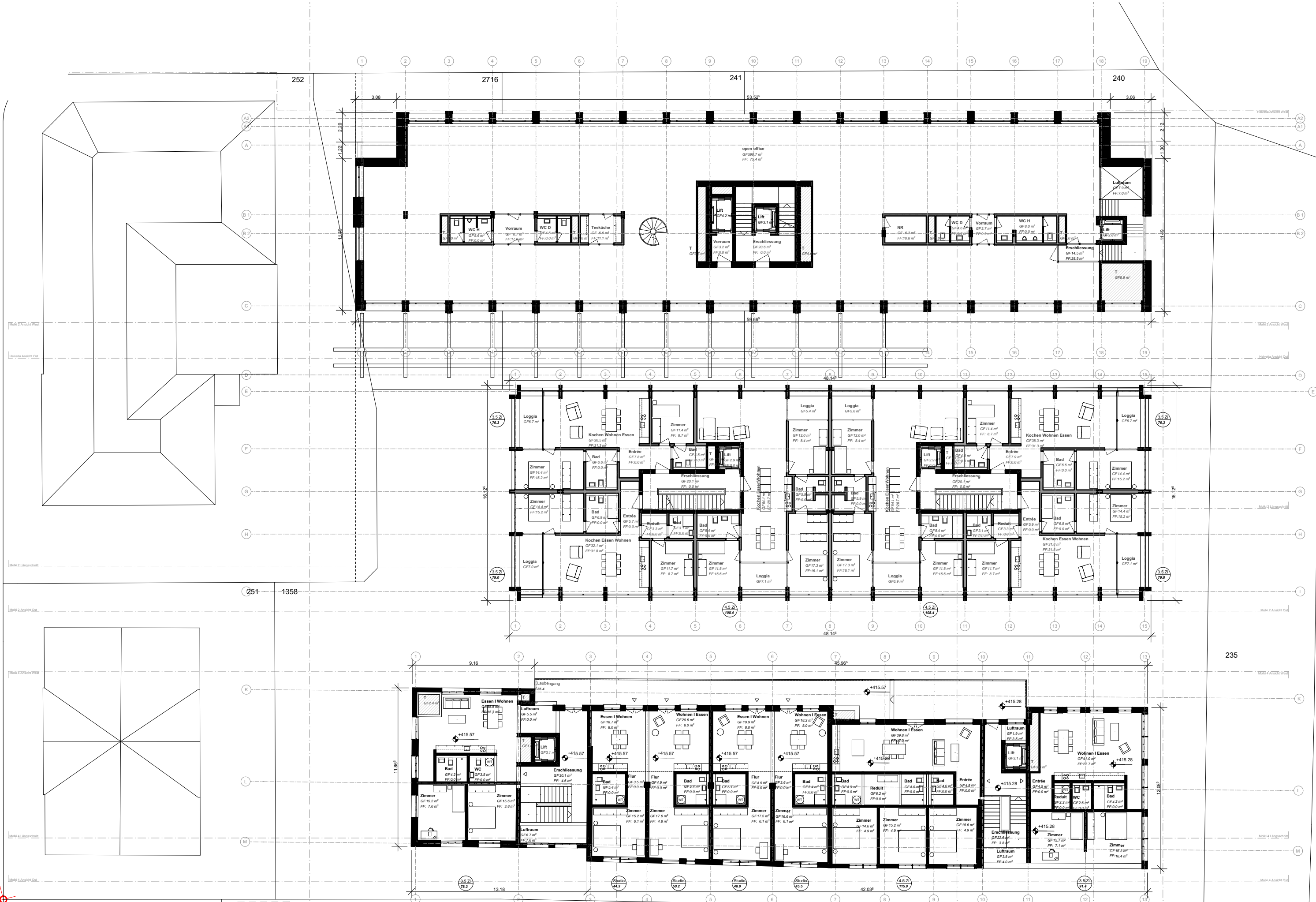


Perspektive Markt

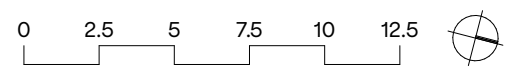


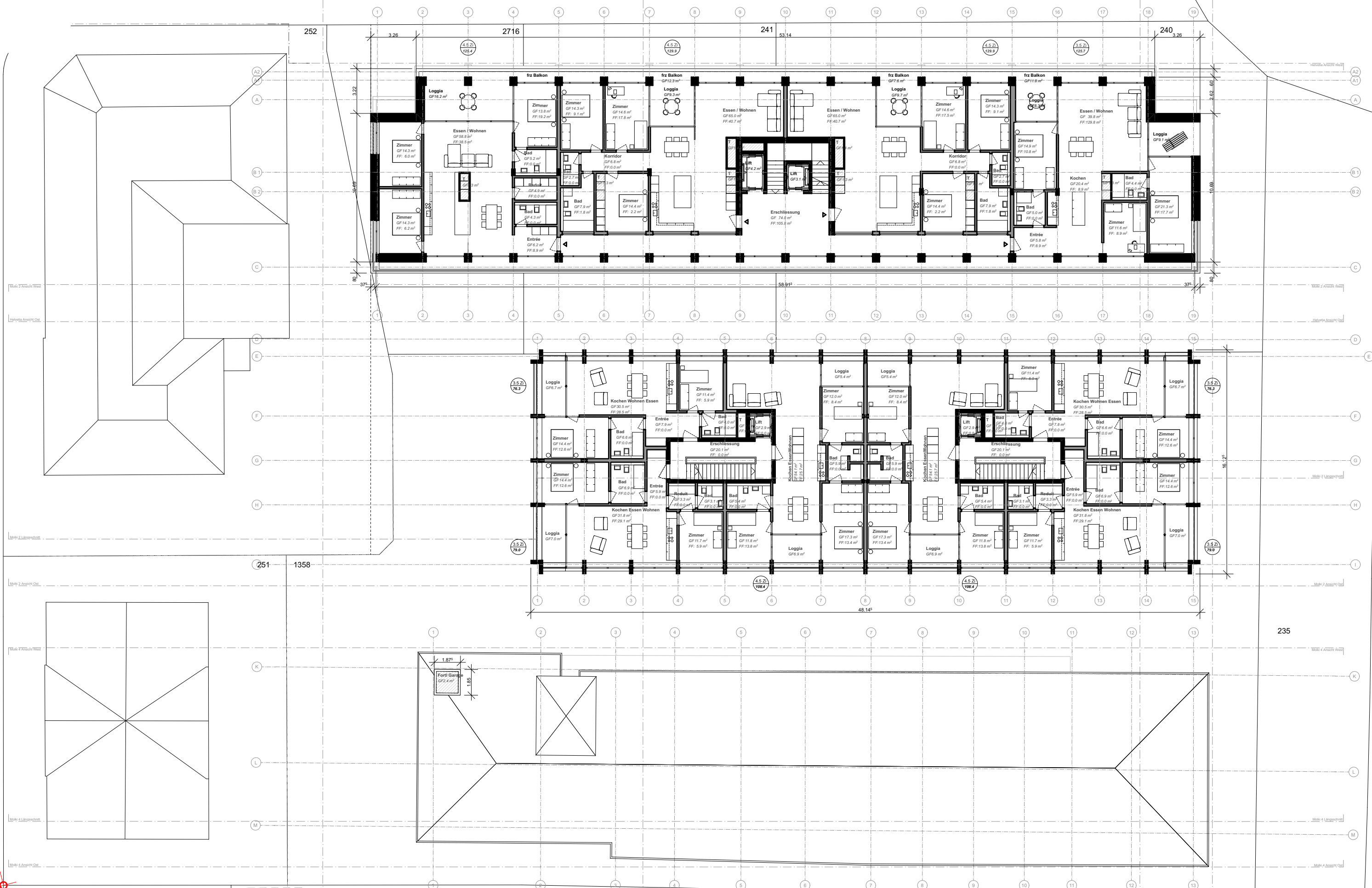
1. Obergeschoss



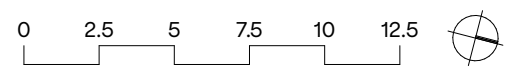


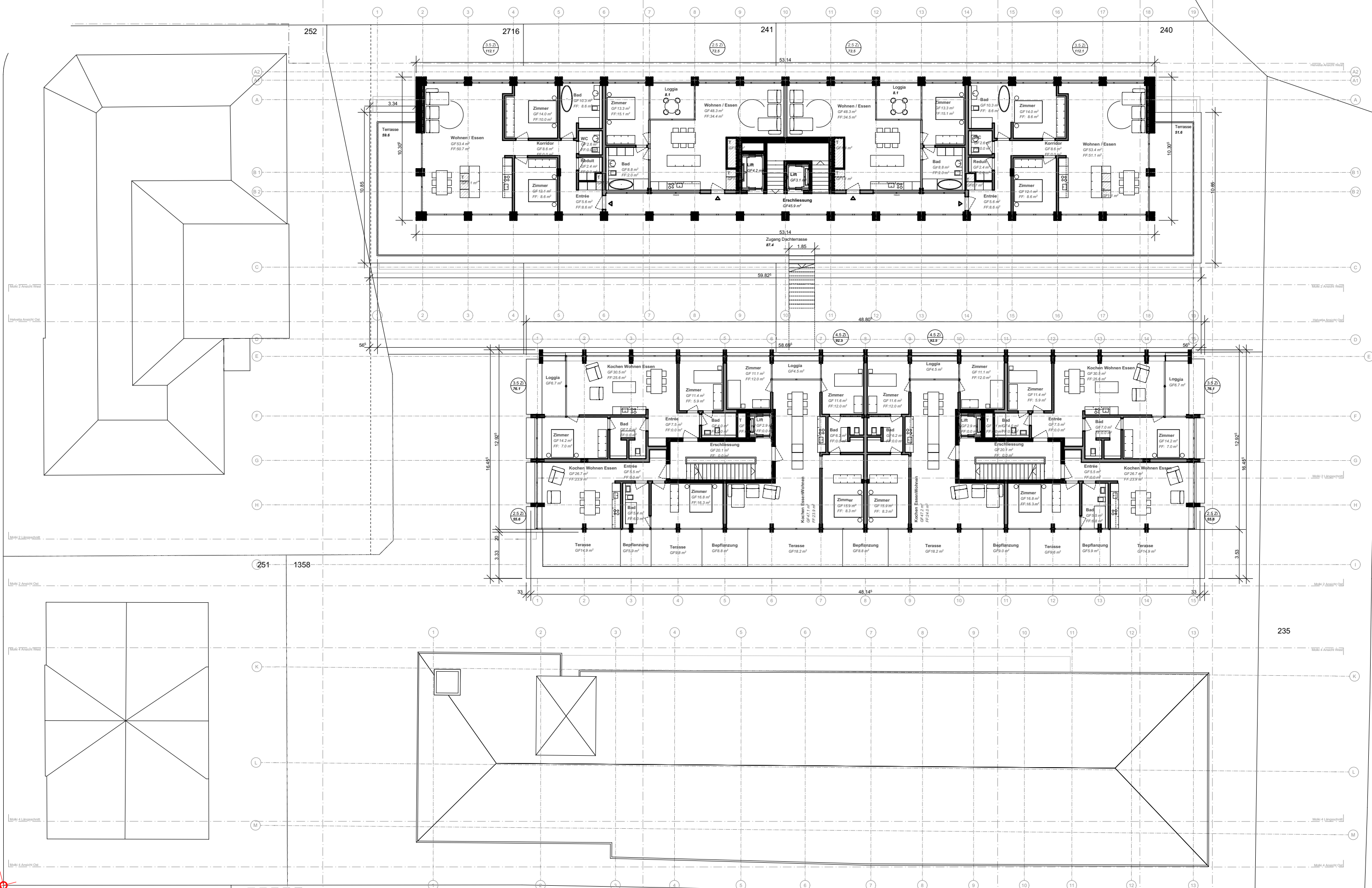
2. Obergeschoss



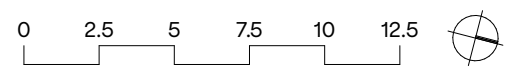


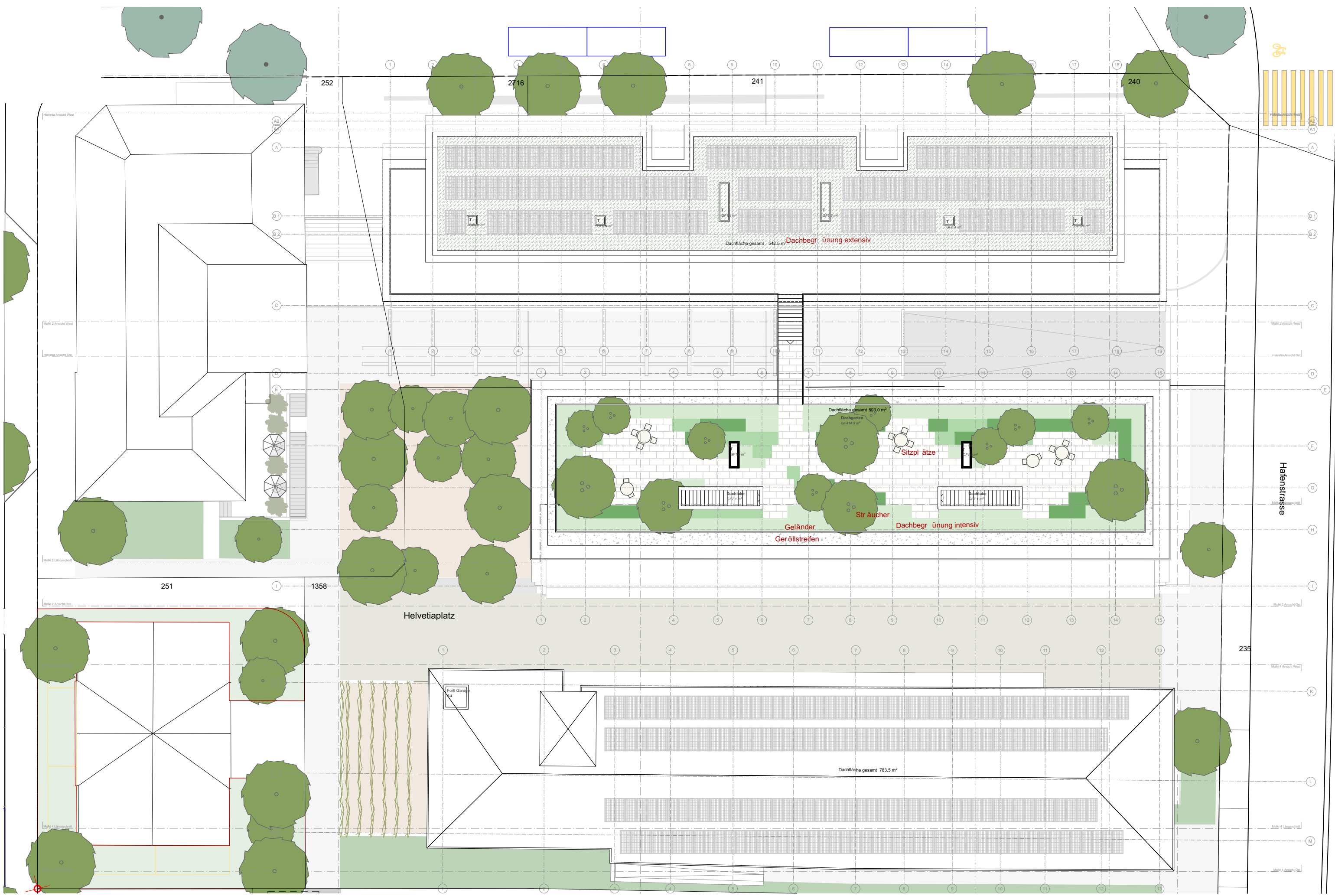
3. Obergeschoss





4. Obergeschoss





Dachfläche gesamt 542,5 m² Dachbegr. ünung extensiv

Dachfläche gesamt 593,0 m²

Dachgarten 6414,9 m²

Sitzpl. ätze

Str äucher

Geländer

Geröllstreifen

Dachbegr. ünung intensiv

Dachfläche gesamt 783,5 m²

Helvetiaplatz

Halenstrasse

Dachaufsicht

